

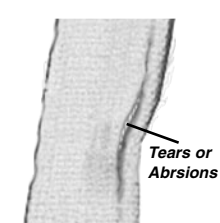
Important User Instructions

GENERAL:

Both EN361 and ANSI 10.14 require users to be trained by a competent person before this harness is used on the job. Each system shall be inspected every six months according to the manufacturer's recommendation and the date of each inspection shall be recorded on the metal tag attached to the harness. Equipment showing any defect shall be withdrawn from service immediately. All fall protection systems subjected to impacts caused by a free fall or by testing shall be removed from service and should not be used again.

INSPECTION:

Each unit shall be visually inspected for defects prior to each use and particular attention should be directed to the following potential defects: Cuts, Cracks, Tears or Abrasions, Undue Stretching, Damage Due To Deterioration, Mildew, Operational Defects, Contact With Heat, Acids or Other Corrosives, Damaged or Distorted D-rings, Buckles, or Eyelets, Sharp Edges, Burrs, or Worn Parts. Make sure all buckles



Tears or Abrasions

Frayed threads

work freely. Check for broken fibers, pulled or cut stitches, burns, discoloration, etc. Broken stitches may be an indication that the harness has been impact loaded and any equipment showing defect shall be removed from service

immediately. All labels should be present and fully legible and must be replaced if illegible or missing. All Lewis Manufacturing Company safety equipment is inspected for quality assurance according to ANSI/ANQC Q9003-1991. The HCB FAH-3 W/T-SS also meets or exceeds the specifications of ANSI 10.14 (1991). The large metal tag riveted to the harness waist belt shows ANSI compliance. This tag is also used to register a permanent record of belt/tail rope inspection. A qualified person other than the user must inspect this safety device twice a year

using the listed potential defects as a reference. The month and the year of inspection is recorded by marking the correct raised letter or number on the tag using a small hammer and a tool such as a center punch.

The smaller tag denotes the following:

1. The individual serial number of the item.
2. The type as it appears in our catalog (EX. TYPE SC) (EX. TYPE TR-10-D-PC).
3. The work load of that particular item.

The item in this box can be identified by referring to the following information:

Serial No. _____

Type: _____

Inspected By: _____

Date: _____

The fabric label attached to the belt indicates the EN361: 1992 standard which the systems have been proven to meet or exceed.

Do not alter this belt in any way. Failure to use this belt properly may result in serious bodily harm.

STORAGE OF EQUIPMENT:

After each use, each unit should be stored in a cool, dry place and not subjected to direct sunlight. Avoid areas where chemical vapors may exist. Thoroughly inspect the HCB FAH-3 W/T-SS after any period of extended storage.

CLEANING INSTRUCTIONS:

1. Belt may be cleaned using warm water and a mild detergent. Wipe off hardware with clean, dry cloth and hang to air dry. Do not force dry with heat.
2. Dry naturally, away from direct source of heat.
3. An excessive buildup of dirt, oil, paint, etc. may prevent the HCB FAH-3 W/T-SS from working properly and in severe cases degrade the webbing to a point where it weakens and should be removed from service.

Please keep this form along with the certification on file for the life of the products you are using. It is very important that these guidelines be followed in order to avoid serious injury or even death. If you have any questions, concerns or doubts regarding safety equipment inspection or placing this or other Lewis Manufacturing product(s) into service, we urge you to contact us collect at any time at (405) 634-5401 or toll-free at 1-888-398-4719.



Do not alter any Lewis Manufacturing equipment in any way. This includes the removal of shoulder straps, leg straps, hardware or rivets. Alteration or improper use of this belt can result in severe bodily harm or even death. Lewis Manufacturing does not assume any liability for accident or injuries resulting from a field-repaired or altered belt.

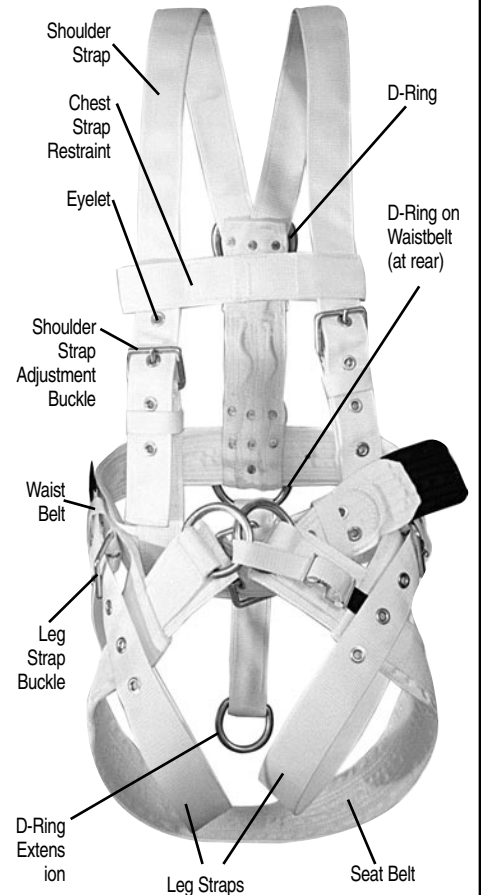
Each unit shall be visually inspected for defects prior to each use as per directions described in the inspection section of this pamphlet. Record two of these inspection dates on metal tags attached to safety belts and tail ropes.



Now accepting
Visa and
MasterCard.



HCB FAH-3 W/T-SS Instruction Manual





How To Put On The Fall Arrest Body Harness

The HCB FAH-3 W/T-SS is a fall arrest harness with a built-in seat. This seat provides an HCB-1 sling seat design, dual D-Rings up front for equalized climbing pressure, and a D-Ring at waist level that provides a well placed leverage point while working the boards.



This belt also comes equipped with a tail. This "tail" provides the user easier access to the locking snap, on the tail rope in use. (see illus.)

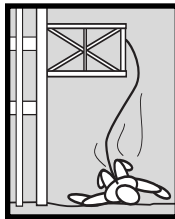
In order to meet the latest OSHA standards, this harness is a true fall arrest harness that comes equipped with a D-Ring positioned between the shoulder blades for attachment of a shock absorber device. This belt also has independent leg straps for an added measure of safety. If you have any questions regarding this belt or any of our products, please call us Toll Free and we will be happy to assist you any way possible. Invest in Safety with genuine Lewis Equipment.

The purpose of the HCB FAH-3 W/T-SS is to provide fall arrest when the user falls toward the ground in either a feet-first or head-first attitude.

The belts are designed for use with a shock absorption device on the D-Ring situated at shoulder level. The D-Rings at waist level are for a genuine Lewis Tail Rope.

The D-Rings on the front of the belt can be used for climbing up the rig.

The harnesses must be used with a genuine Lewis Tail Rope but will not prevent injury when the fall is less than the length of the tail rope. Always use the shortest tail rope possible. Tail rope must be attached so maximum free fall is 1.8 feet (0.5 meters).



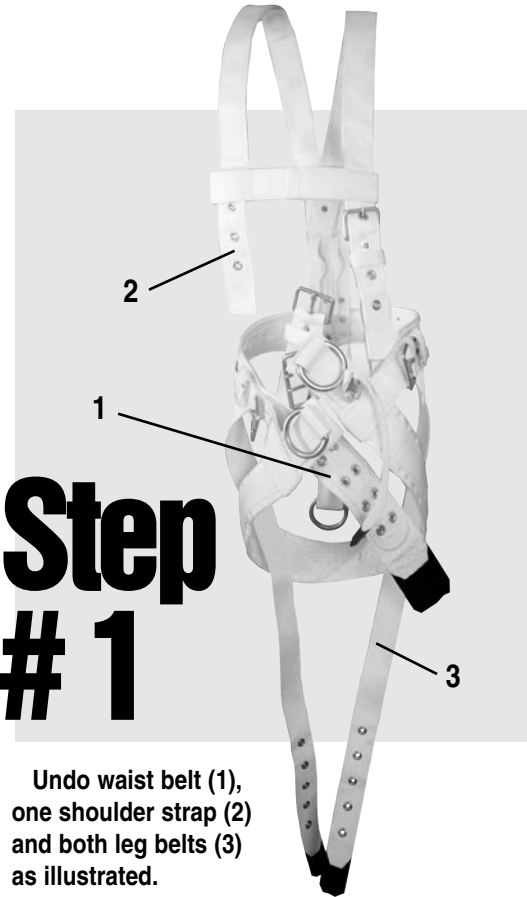
These safety harnesses are manufactured in conformance with the provisions of the European standard EN361-1992 and shall, therefore, be used only as stipulated in those provisions.

It is recommended that the safety harnesses be used as a personal issue according to the size ranges for each model as shown in the chart below. If these harnesses are to be used by several different people, each user should follow manufacturers instructions for use, inspections, etc. in the same way as a personal issue.

This operating instructions manual must always be kept available as long as the safety harness with which it was furnished is in service.

The metal inspection tag on the harnesses shall be kept current as per instructions on the reverse side of this manual.

Part #	Waist Size Range	Metric
HCB FAH-3 W/T-SS-XS	28" - 36"	71 - 86 cm
HCB FAH-3 W/T-SS-S	29" - 38"	76 - 91 cm
HCB FAH-3 W/T-SS	36" - 44"	91 - 109 cm
HCB FAH-3 W/T-SS-L	41" - 49"	109 - 124 cm
HCB FAH-3 W/T-SS-XL	43" - 52"	116 - 132 cm



Step # 1

Undo waist belt (1), one shoulder strap (2) and both leg belts (3) as illustrated.



CAUTION

Do not alter any Lewis Manufacturing equipment in any way. This

includes the removal of shoulder straps, leg straps, hardware or rivets. Alteration or improper use of this belt can result in severe bodily harm or even death. Lewis Manufacturing does not assume any liability for accident or injuries resulting from a field-repaired or altered belt. Avoid attaching lanyard around sharp edges.

Each unit shall be visually inspected for defects prior to each use as per directions described in the inspection section of this pamphlet. Record two of these inspection dates on metal tags attached to safety belts and tail ropes.



Step # 2

Place shoulder straps over your head and onto your shoulders and adjust shoulder straps and waist belt as illustrated above and then fasten. Belt should feel snug but not too tight as to restrict circulation or excessively inhibit movement.

Waistband should be placed at or slightly above the waist of regular work pants (as shown above).



Ensure that the leg straps overlap sling seat as shown here.



Step # 3

Secure leg straps snugly around legs.

During the wear-in period, the harness will become more pliable. Periodic readjustment may be necessary.



For climbing.



For working the boards.



CAUTION

Don't use this belt if you weigh more than 300 lbs. (136 kg.)